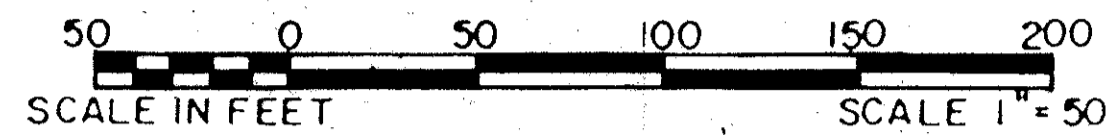


# LAKEFIELD OF THE LANDINGS AT WELLINGTON P.U.D. - PLAT 3B

IN PART OF SECTION 7, TOWNSHIP 44 SOUTH, RANGE 41 EAST  
 PALM BEACH COUNTY, FLORIDA  
 IN FIVE SHEETS SHEET NO. 4

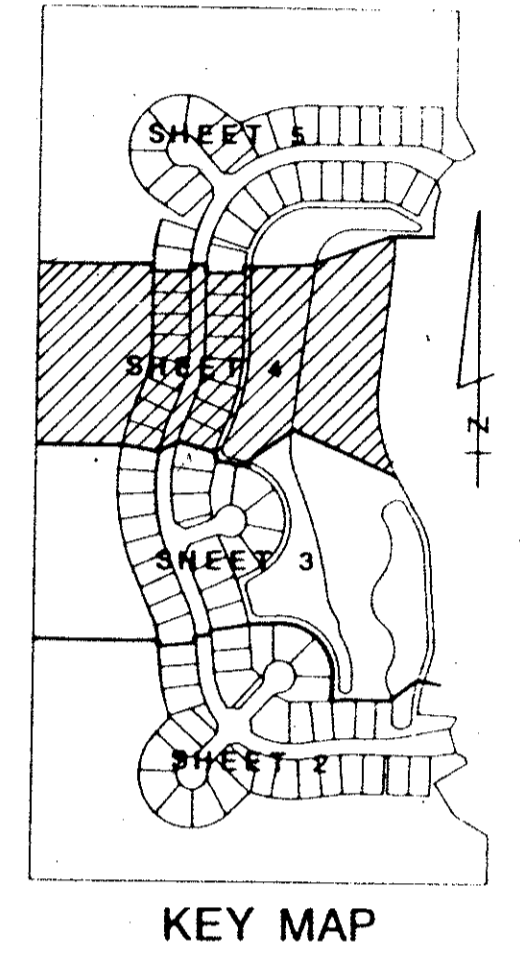
GEE & JENSON  
 ENGINEERS - ARCHITECTS - PLANNERS, INC.  
 WEST PALM BEACH, FLORIDA  
 AUGUST 1988



# 41

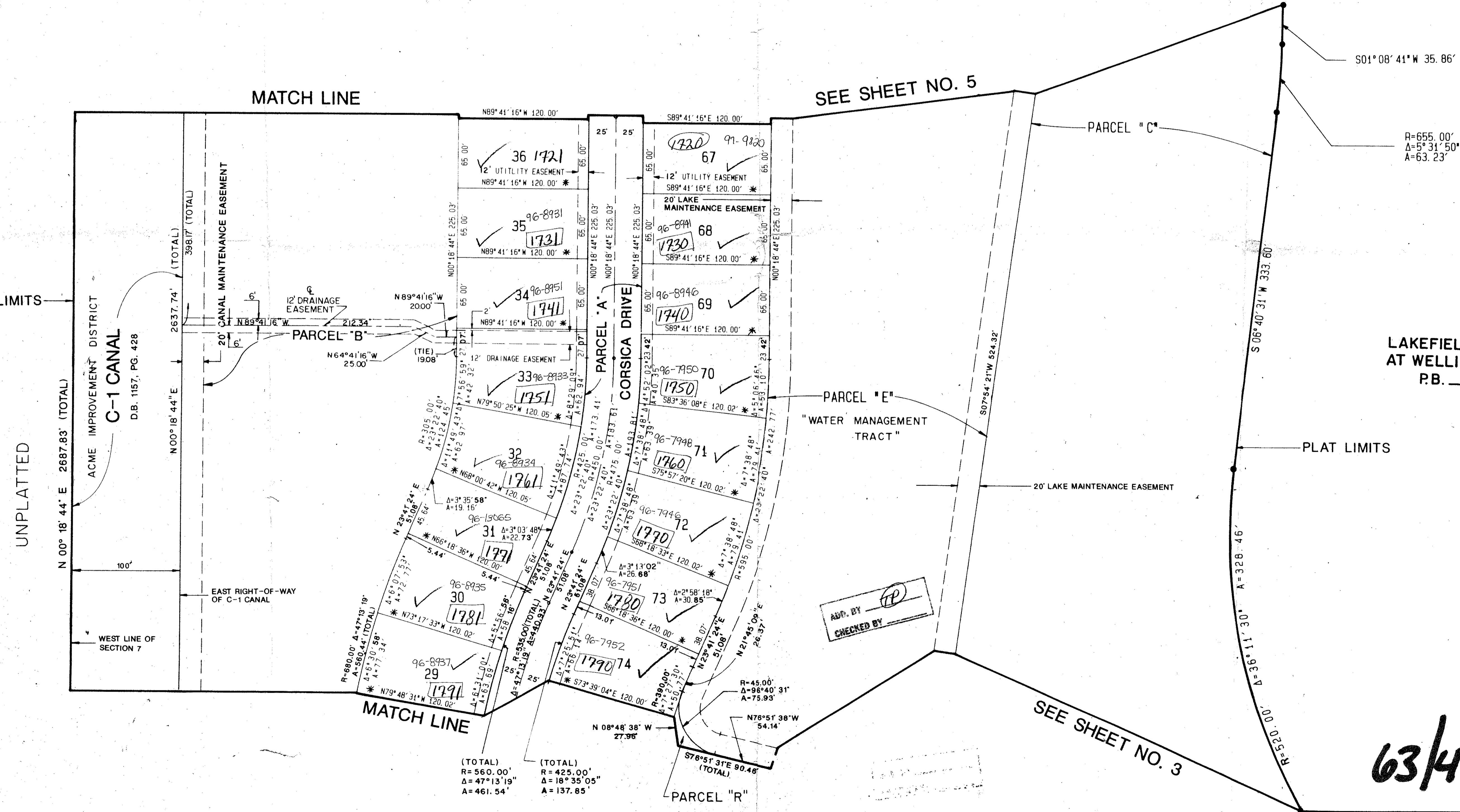
STATE OF FLORIDA  
 COUNTY OF PALM BEACH  
 This plat was filed for  
 record at \_\_\_\_\_ M. this \_\_\_\_\_ day  
 of \_\_\_\_\_ 1988, and duly  
 recorded in Plat Book No. \_\_\_\_\_  
 on Pages \_\_\_\_\_ thru \_\_\_\_\_.

JOHN B. DUNKLE  
 Clerk Circuit Court  
 By: \_\_\_\_\_ D.C.



*Lakefield of the Landings*  
 SUBDIVISION at Wellington P.U.D. Plat 3B  
 BOOK 03 PAGE 41  
 FLOOD ZONE B  
 QUAD 77  
 TAZ 727  
 PUD NAME Same  
 RE 78-287  
 33414

COMPUTED DWL/CAD  
 DRAWN DWL/CAD  
 CHECKED JTD  
 APPROVED LIT  
 REVISION



0269-007  
 Plat. 78-287  
**63/41**

NOTE: ALL LINES ARE NON-RADIAL UNLESS OTHERWISE NOTED!

\* - INDICATES ZERO LOT-LINE

LAKEFIELD OF THE LANDINGS AT WELLINGTON P.U.D. - PLAT 3B  
 WATER MANAGEMENT TRACTS ARE THE PERPETUAL MAINTENANCE TRACTS OF THE LAKEFIELD OF THE LANDINGS AT WELLINGTON P.U.D. - PLAT 3B, ENGINEERS - ARCHITECTS - PLANNERS, INC.